



Oil pressure double-acting lever clamp

Model: HTMA-2
 High pressure (3.5 to 35MPa)
 High capacity · Compact type

Model Representation

HTMA ① - ② (Example HTMA0400-2CC)

① Dimension (refer to specification sheet) ② Platen direction

HTMA	0250-2	—	CL: left CF: forward CR: right	
	0400-2			
	0600-2			
	1000-2			
	1600-2			
	2500-2			
3200-2				

Specification

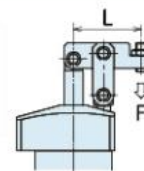
Model		HTMA0250-2	HTMA0400-2	HTMA0600-2	HTMA1000-2	HTMA1600-2	HTMA2500-2	HTMA3200-2	
Cylinder capacity (at 35MPa)	(KN)	3.25	5.3	8.75	12.15	21.5	28	39.56	
Clamping force	When the oil pressure is 35MPa	(KN)	2.5	3.7	5.75	9.12	15.4	21.83	30.65
	Clamping arm length (LH)	(mm)	36	42	50	56	67	77	95
Main rod diameter	(mm)	10	12	14	18	22	28	32	
Bore of cylinder	(mm)	11.5	14	18	22	28	32	38	
Cylinder area (clamping)	(cm ²)	1	1.35	2.3	3.5	6	8	11.2	
Full stroke	(mm)	20.5	23.5	26	29.5	35	41	49	
Clamping stroke	(mm)	17.5	20.5	23	26.5	32	38	46	
Rotation stroke	(mm)	3	3	3	3	3	3	3	
Maximum operating pressure	(Mpa)	35.0							
Minimum operating pressure	(Mpa)	3.5							
Withstand pressure	(Mpa)	40.0							
Operating temperature	°C	0~70							

Precautions

※1. In the clamping force calculation formula, F: clamping force ((KN) P: supplied oil pressure (MPa), L: distance from the center of the piston to the clamping point (mm).

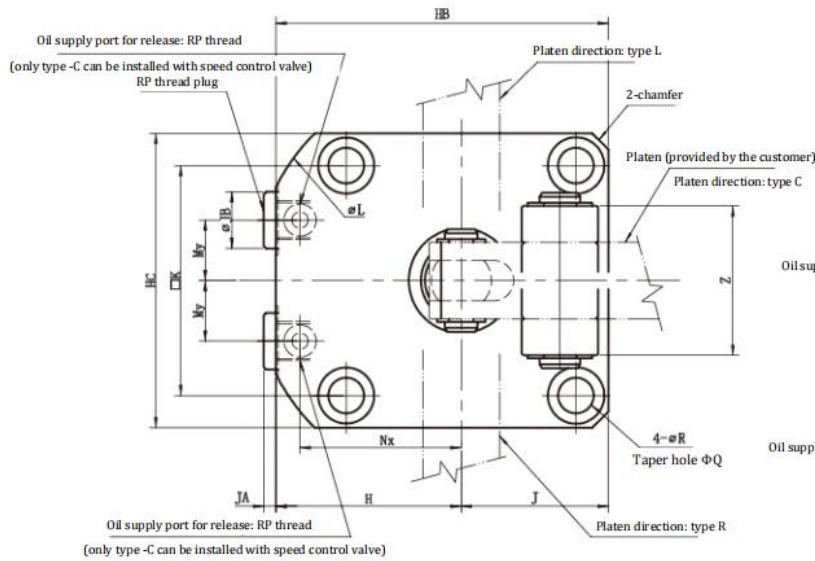
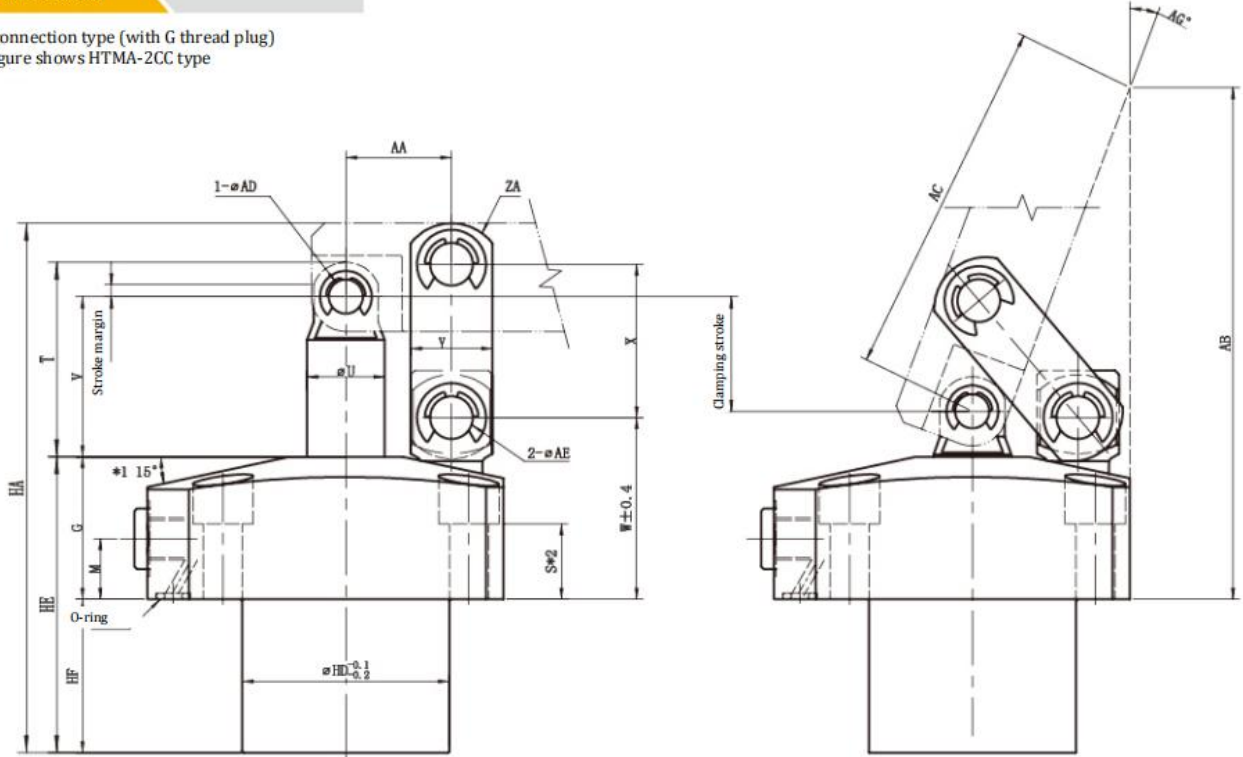
*2. It indicates the minimum pressure at which the clamp operates under no-load conditions.

*3. It indicates the weight of a single lever clamp, excluding the platen.

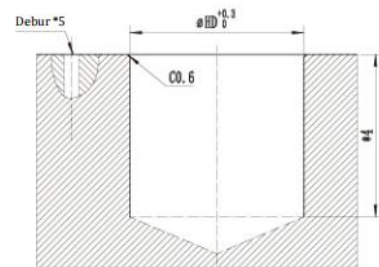
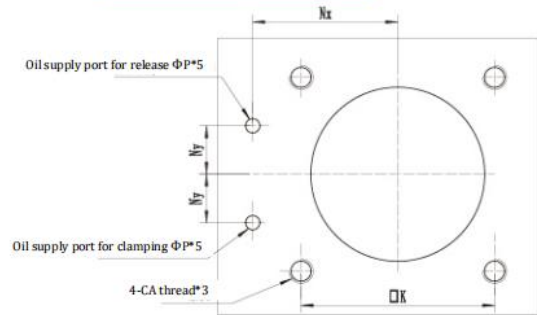


Overall dimension

C: plate connection type (with G thread plug)
 ※ This figure shows HTMA-2CC type



Installation hole processing drawing



Precautions

- ※1. Only the HTMA1000 flange has an inclination angle of 12°.
- ※2. This product does not include the installation bolts. Please configure it by yourself according to the installation height and with reference to the S dimension.
- 1. Use the attached pin (similar to φADf6, φAEf6, and HRC60) for the pin for installing the platen.

Precautions

- ※3. Please refer to the S dimension and determine the CA thread depth of the installation bolt according to the installation height.
- ※4. Please refer to the HF dimension and determine the depth of the main body installation hole φHD according to the installation height.
- ※5. This process indicates -C: plate connection type.

Overall dimension

(mm)

Model	HTMA0250-2	HTMA0400-2	HTMA0600-2	HTMA1000-2	HTMA1600-2	HTMA2500-2	HTMA3200-2
Full stroke	20.5	23.5	26	29.5	35	41	49
Clamping stroke	17.5	20.5	23	26.5	32	38	46
Stroke margin	3	3	3	3	3	3	3
HA	87.1	97.6	108.6	122.6	151.1	175.6	205.1
HB	54	61	69	82.5	94.5	109.5	127
HC	45	51	60	73	85	100	120
HD	33	36	43	48	60	70	85
HE	53.5	58.5	63	68.5	84	96.5	111
HF	27.6	30.6	33.1	35.6	46.1	54.6	61.1
G	26	28	30	33	38	42	50
H	31.5	35.5	39	46	52	59.5	67
J	22.5	22.5	30	36.5	42.5	50	60
K	34	40	47	57	65	75	88
L	73	81	88	103	116	136	147
M	11	12	13	14	16	17	19
Nx	26	30	33.5	40	45	52.5	60
Ny	9	10	12	15	16	18.5	20
P	3	3	3	3	5	5	5
Q	9	9	11	14	17.5	20	20
R	5.5	5.5	6.8	9	11	14	14
S	15.5	16.5	16	17.5	17.5	18	24
T	30.5	35	37.5	45	55	64.5	77
U	10 f7	12 f7	14 f7	18 f7	22 f7	28 f7	32 f7
V	25	29	31.5	37	45	52	62
W	31.5	34.5	37.5	42	49	54.5	64
X	22	26	30	35.5	43.5	52.5	64
Y	13	13	16	19	25	28	32
Z	21	21	28	37	40	49	64
ZA	R7.5	R7.5	R10	R12	R15	R16	R18
Chamfer	3	3	3	4	5	8	(Φ147)
AA	16	18.5	21	24.5	30	36	44
AB	78.7	92.4	103.9	118.4	131.8	148.5	173.6
AC	50.2	61.2	71.7	83	90.8	104.6	122.5
AD	6	6	6	8	10	12	15
AE	6	6	8	10	12	15	18
AG	20.2	18.9	19.9	20.5	21.5	22.4	23.1
CA	M5X0.8	M5X0.8	M6	M8	M10	M12	M12
JA	3	3	3	3	3.5	3.5	3.5
JB	14	14	14	14	19	19	19
RP thread	RP1/8	RP1/8	RP1/8	RP1/8	RP1/4	RP1/4	RP1/4
O-seal ring	4.8×1.9	4.8×1.9	4.8×1.9	4.8×1.9	6.8×1.9	6.8×1.9	6.8×1.9